

IMAGE OF THE FORTNIGHT

PRESENTER:-DR.K.VAMSEE KRISHNA
(Final year postgraduate)

MODERATOR:-DR. C.SNEHA
MD(RADIOLOGY)

A 80-year-old male came to ortho OPD with severe back pain for 3 weeks.

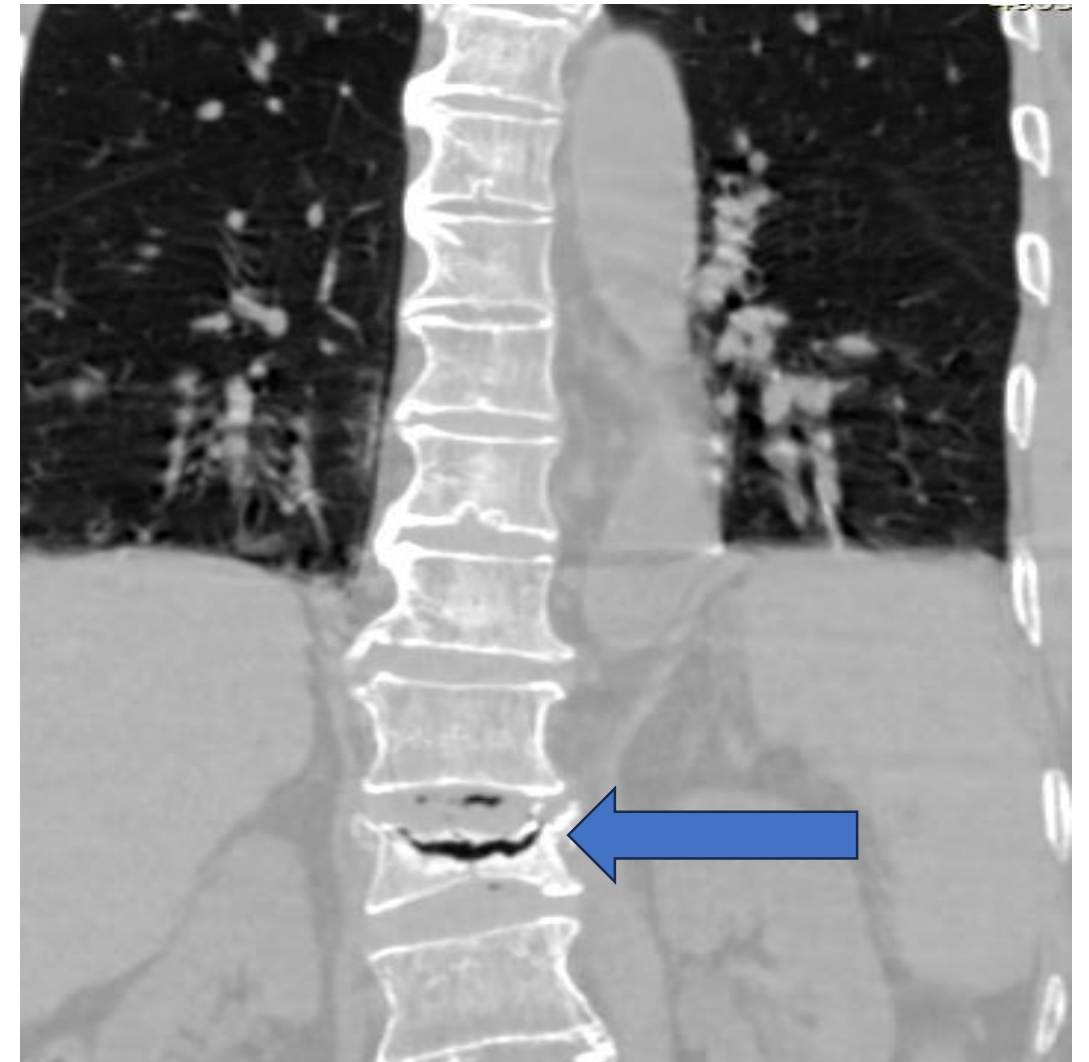
There is History of a trivial fall about 2 months ago, initially he had mild pain and improved with medication.

Known alcoholic and No H/O fever and weight loss.

CT Dorso –lumbar spine was done.



What are the findings?
Name the disease?



D12 vertebral body is collapsed with classical horizontal cleft of gas **within the bone** suggestive of **avascular necrosis**

Kümmell disease

An eponymous name for **delayed post-traumatic vertebral body collapse**.

The underlying pathogenesis is **osteonecrosis** due to ischemia after minor trauma.

Risk factors

- osteoporosis
- corticosteroid use
- alcohol use
- radiation therapy

Radiographic features

Plain radiograph / CT

- Shows collapse of affected vertebrae (typically lower thoracic and upper lumbar)
- An intravertebral vacuum cleft and fluid may be seen.

MRI

- The intravertebral vacuum cleft is usually seen as low signal intensity with all sequences
- If intravertebral fluid is present it is low T1 signal and high T2 signal

THANK YOU